

Carbon Accounting EXPLAINED



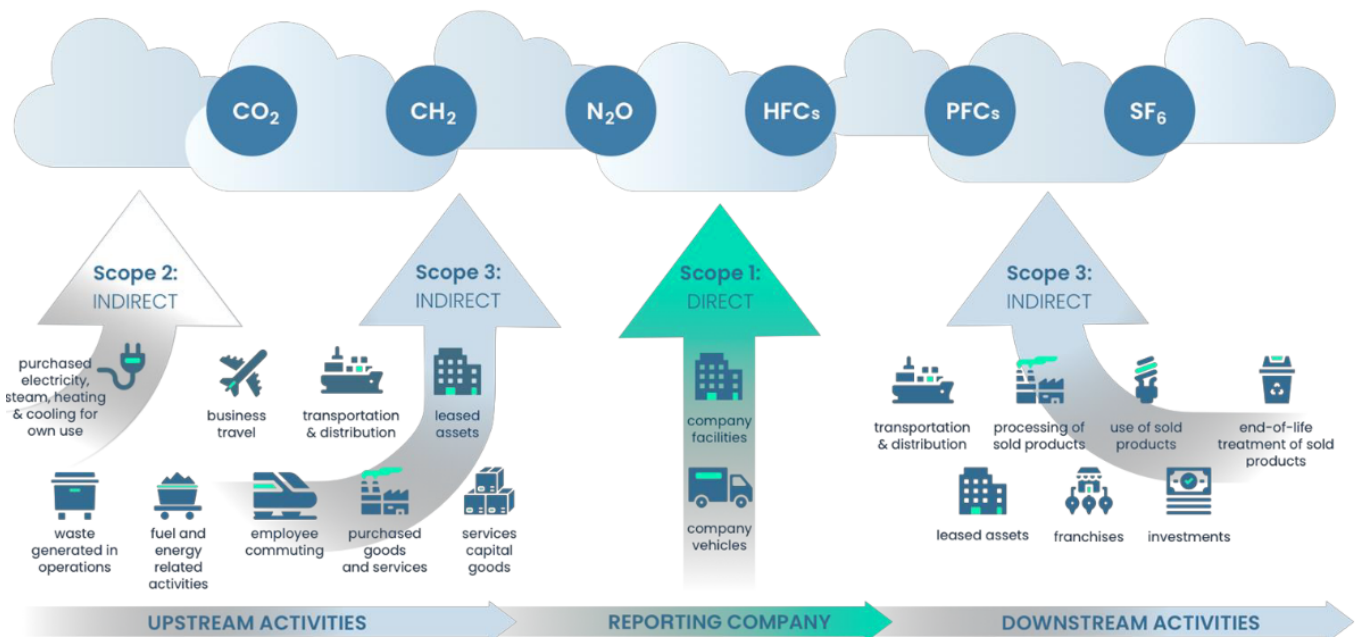
24SevenOffice

Explained

Our solution

Our solution exists to simplify the journey to Net Zero for companies. The journey starts with gaining insights into your own data through fully automated carbon accounting.

Carbon accounting is a general term for a process of defining and tracking a company's or nation's carbon footprint. We follow the international standard Greenhouse Gas Protocol (GHG protocol) for reporting, the most widely used model for calculating greenhouse gas emissions. It divides all your emissions into three categories, which we make available in three steps:



- **SCOPE 1:** Direct emissions arising from sources controlled or owned by your organization.
- **SCOPE 2:** Indirect emissions from energy consumption.
- **SCOPE 3:** Indirect emissions linked to the value chain.

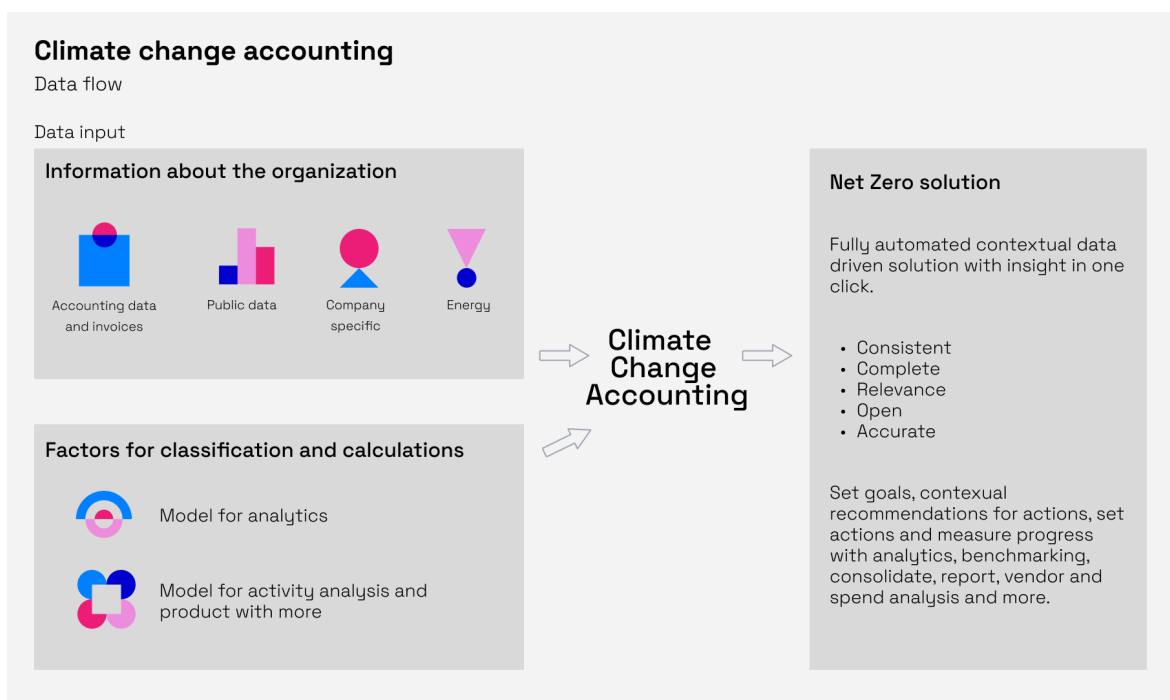
Explained

Each scope contains a set of activities that you quantify to get your accounts.

Energi.AI takes all activities in a company, either based on financial activities (financial consumption/spend) where one cannot classify down to actual consumption or products, actual consumption where it is available (litres of fuel, kWh, etc.), or actual products where it is relevant. We combine these with relevant emission factors and calculate emissions.

We obtain the primary data from the accounting system, either continuously through integration or by uploading SAFT or CSV files. The result is an insight into the company's actual emissions and profile. By understanding the company's carbon footprint, it can use this information to make good business decisions that benefit both the company and the planet.

Illustration of data flow





Turning data into actionable insights

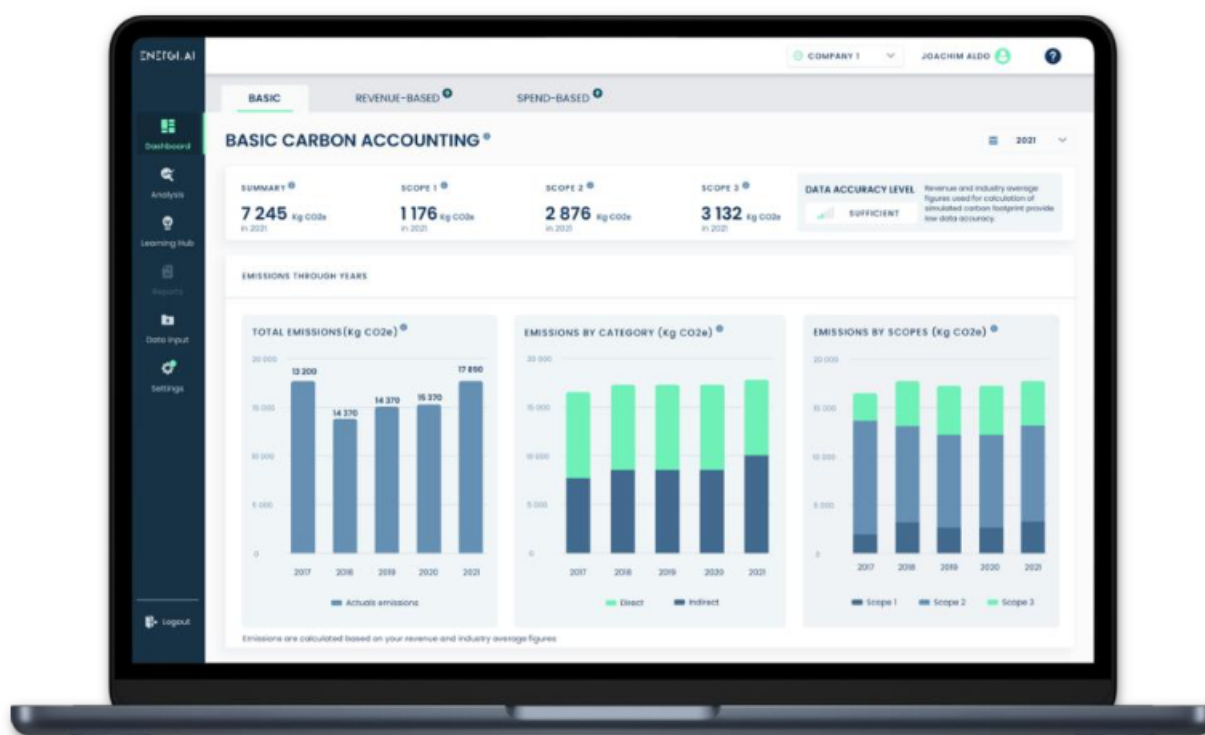
Energi.AI's unique data-driven and contextual approach empowers companies to set their own sustainability goals, obtain contextual recommendations for measures, track progress, compare against industry peers, generate reports, and conduct supplier analyses and planning.

Our recommendations and analyses are powered by advanced machine learning and artificial intelligence algorithms. We leverage comparative analysis to provide companies with a comprehensive understanding of their emissions performance in relation to other relevant players in their industry.

From “report in the drawer” to actionable management tools

Traditional climate reporting can be an expensive and time-consuming process, with weeks or months spent on data collection and analysis. Energi.AI simplifies this process by delivering always up-to-date, intuitive dashboards and reports that transform sustainability reporting into a relevant management tool.

Our platform is continuously updated to ensure our users receive the maximum value from our software. We prioritize incorporating new data sources, responding to regulatory requirements, and developing new functionality that aligns with the evolving needs of our users.





24SevenOffice

